



ROCKSHIELD RUBBER COMPANY

INNOVATIVE WEAR COMPONENT SOLUTIONS FOR TODAY'S MINERAL PROCESSING AND AGGREGATE INDUSTRIES

MINESHIELD MAGNETIC LINING SYSTEM

Magnetically fastened liner systems have been around for several years now and have experienced a fair amount of success in the industry. Customers find value in the ease of installation with these types of liners and can often justify the additional up front cost with the reduction in installation time vs a bolt in or weld in type liner.

RockShield has developed a line of magnetic liners that at first glance would look very much like the competition. However, upon closer examination you will see our design is quite different and its attributes add fantastic holding power and versatility that is unmatched by others in the industry.

So What's Different?

Magnets: RockShield offers two different magnet systems to fit the customer's application and price point.

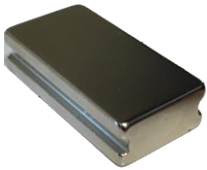
- The premium system utilizes a "Snap In" magnet that is fully replaceable and the most user friendly. With this system a customer can add, subtract, and replace magnets in the field by simply using a non-metallic hammer to drive the magnets into their snap pockets.

- The more economical system utilizes our "Standard" magnet which is not intended to be removed from the liner. However should a magnet come out the customer is still able to replace this style magnet in the field with the application of an off the shelf adhesive between the magnet and the steel insert which is embedded into the liner.

Inserts: To increase the magnets strength we added a proprietary steel insert into the liner which can add up to 20% - 30% more holding power. This also helps with the magnet in staying adhered to the liner as the magnetic forces are being drawn in two directions instead of one.

Field Customization: Adaptability is key and that is why our liners have the ability to add more magnets in the field if required. Every liner comes with provisions for additional "snap pockets" to use should the customer find they need more holding power for a particular application. These extra provisions add little to no cost to the actual part but offers a huge advantage to the customer in that these liners can be customized in the field to fit their exact needs.

Unlike many other competitive magnetic liners out there our rubber liners can be cut or trimmed to fit any space. This allows customers to buy liners in sheets and field fit the liners themselves.



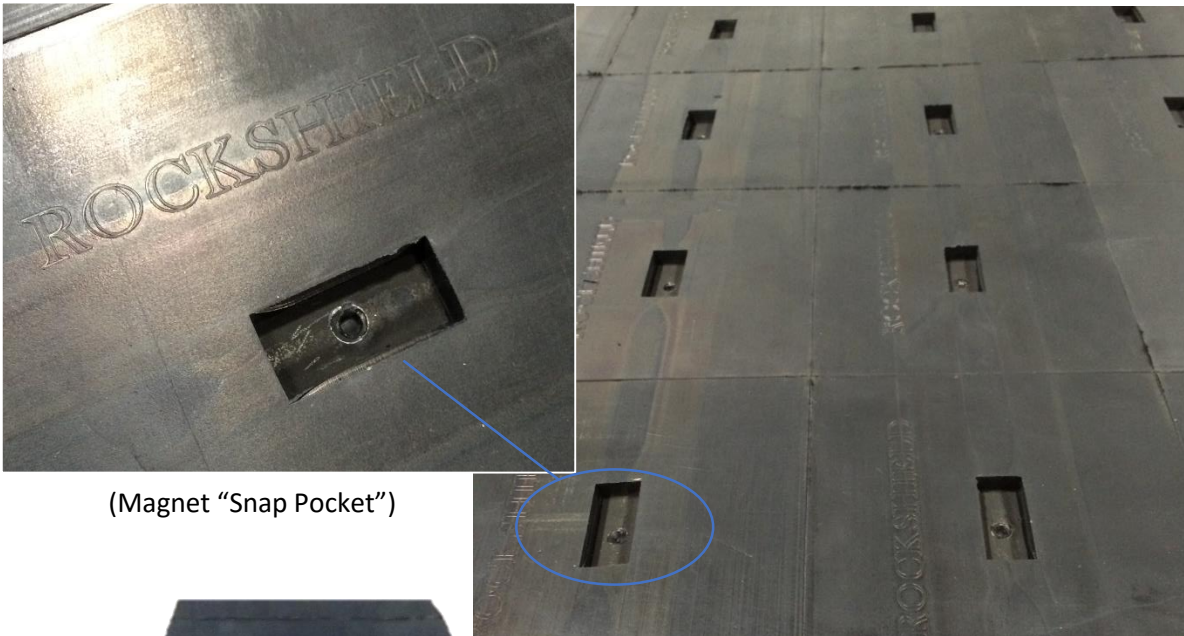


ROCKSHIELD RUBBER COMPANY

INNOVATIVE WEAR COMPONENT SOLUTIONS FOR TODAY'S MINERAL PROCESSING AND AGGREGATE INDUSTRIES

Summary:

- Two magnet profiles to choose from
 - "Snap In" magnets for replaceable system (Higher cost / Fully replaceable)
 - Standard magnets for more permanent installation (Lower cost / Less replaceable)
- Holding power is approximately 45 – 60 lbs per magnet (Dependent on style of magnet)
- Proprietary steel inserts in liner multiply magnetic force and creates a bi-directional magnetic field to better keep magnets in place
- Additional "Snap Pockets" are molded in to add more magnets and increase holding power in the field if necessary
- Standard magnets can be replaced in the field with addition of adhesive



(Magnet "Snap Pocket")

